



# GAT MONTHLY MEMBERSHIP PROGRESS REPORT

Results as of: 8/31/2021

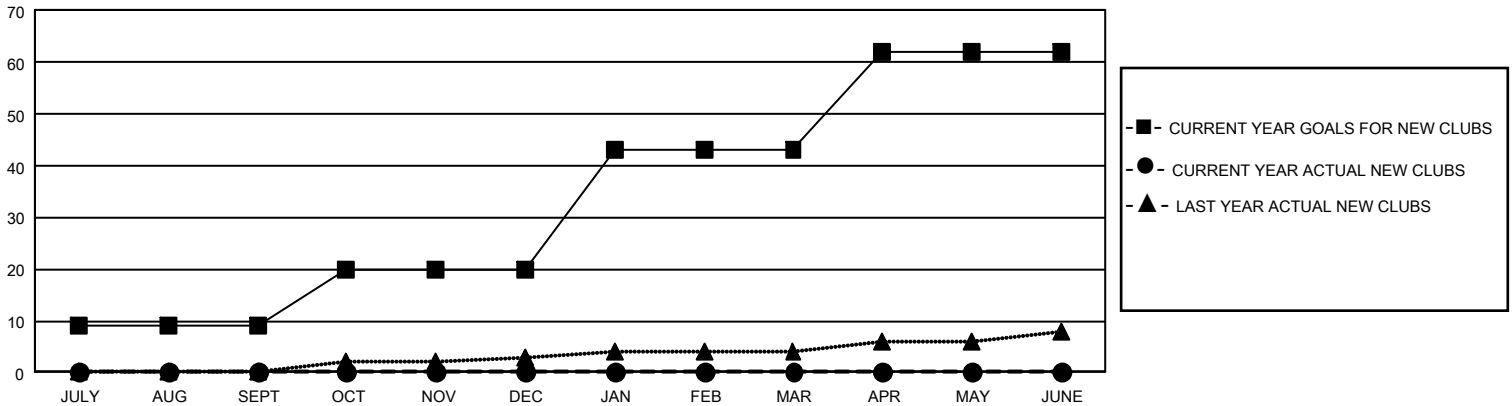
## GAT Constitutional Area 5 - Japan

REPORT DOES NOT INCLUDE CLUBS IN UNDISTRICTED AREAS.

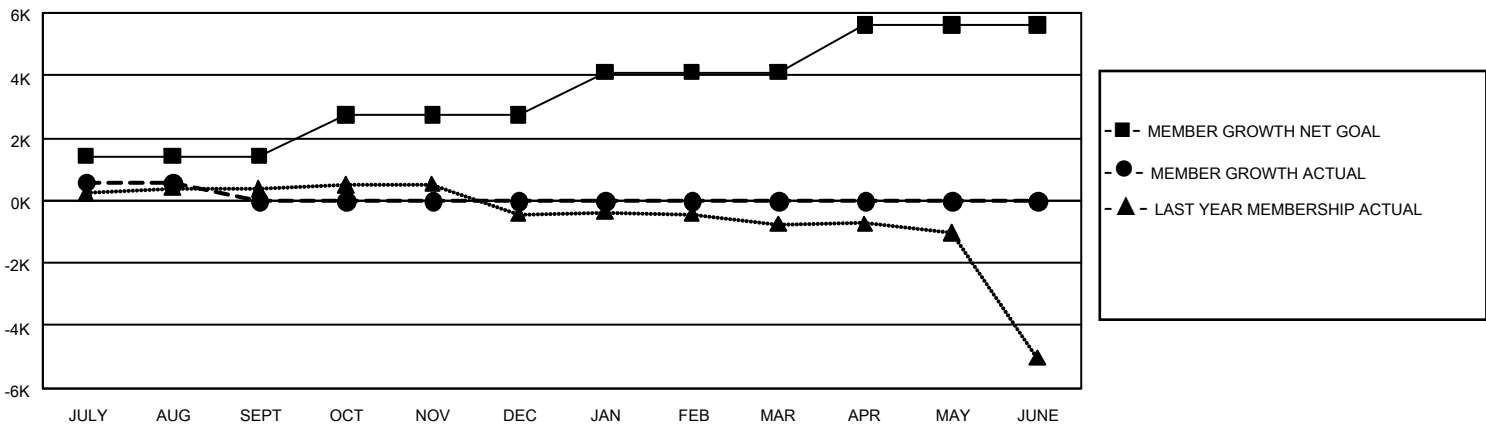
Clubs			
RESULTS FOR 2021-2022			
QUARTER	NEW CLUB GOAL	NEW CLUBS	DROPPED CLUBS
JULY/AUG/SEPT	27	0	5
OCT/NOV/DEC	33	0	0
JAN/FEB/MAR	69	0	0
APR/MAY/JUNE	57	0	0

Members			
RESULTS FOR 2021-2022			
QUARTER	MEMBER GROWTH NET GOAL	MEMBER GROWTH ACTUAL	DROPPED MEMBERS ACTUAL (including transfers)
JULY/AUG/SEPT	1424	1,698	1,022
OCT/NOV/DEC	1305	0	0
JAN/FEB/MAR	1381	0	0
APR/MAY/JUNE	1520	0	0

GOALS AND ACTUAL NEW CLUBS CUMULATIVE



GOALS AND ACTUAL MEMBERS CUMULATIVE



<b>DROPPED CLUBS: 5</b>	<b>880 CLUBS OF 2,850 ADDED 1 OR MORE NEW MEMBERS</b>	<b>GENDER DISTRIBUTION</b>	
		MALE 78,086 (76.58%)	FEMALE 23,884 (23.42%)
<b>DROPPED MEMBERS</b>		NON BINARY 0 (0.00%)	PREFER NOT TO ANSWER 0 (0.00%)
DECEASED 110	<a href="#">CLICK HERE FOR CUMULATIVE MEMBERSHIP DATA</a>	<b>TOTAL FAMILY UNIT MEMBERS 35,676</b>	
CLUB CANCELLED 2		<b>FAMILY MEMBERS PAYING HALF DUES 19,651</b>	
OTHER 912			
<b>TOTAL 1,024</b>			